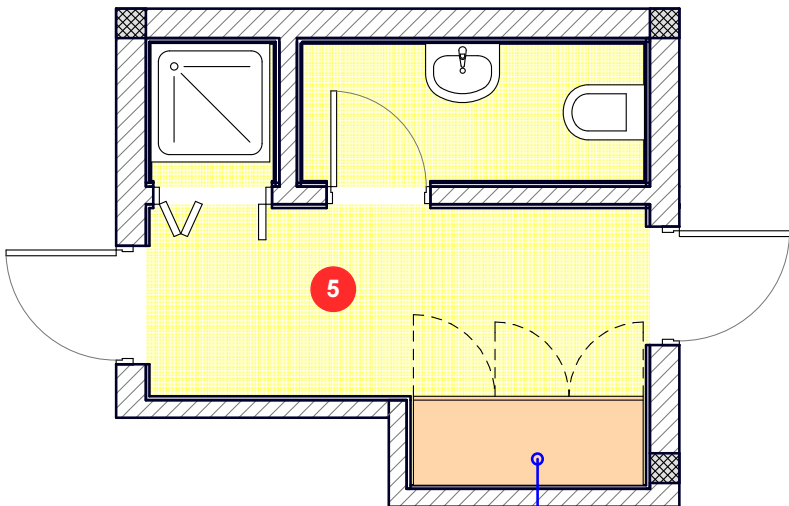
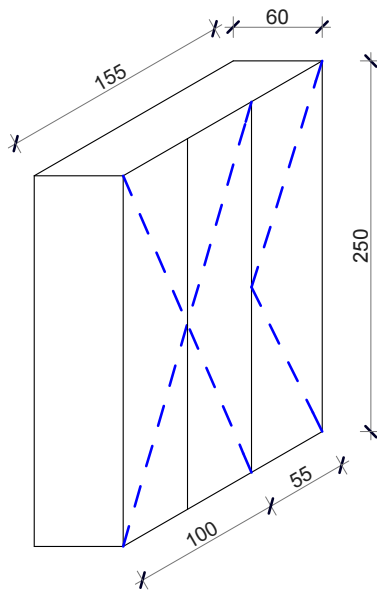


CLOAKROOM AND  
SHOWER



Cabinet dimensions are 155x60x250. The construction of the cabinet is of the 18mm thick chipboard, design is be selected by the user. The inside of the cabinet is with 5 shelves (the part where the double doors). Part where the single door one shelf at a height of 200cm and below the shelf part for hanging jackets. The front of the cabinet are three doors to lock. Handles are made of PVC plastic or aluminum. Calculation per piece. The price includes the purchase and installation.

1 PIECE



NOTE

Photos that are attached do not represent the final appearance of elements but as an example for easier understanding and bidding (prices). The final appearance in agreement with the future users.

PROJECT ORGANIZATION:		INVESTOR:	
<div><div><div><div><div></div><div></div><div></div><div></div><div></div></div><div><div></div><div></div><div></div><div></div><div></div></div><div><div></div><div></div><div></div><div></div><div></div></div><div><div></div><div></div><div></div><div></div><div></div></div></div><div><div><div></div><div></div><div></div><div></div><div></div></div><div><div></div><div></div><div></div><div></div><div></div></div><div><div></div><div></div><div></div><div></div><div></div></div><div><div></div><div></div><div></div><div></div><div></div></div></div><div><div><div></div><div></div><div></div><div></div><div></div></div><div><div></div><div></div><div></div><div></div><div></div></div><div><div></div><div></div><div></div><div></div><div></div></div><div><div></div><div></div><div></div><div></div><div></div></div></div></div><div><div><div></div><div></div><div></div><div></div><div></div></div><div><div></div><div></div><div></div><div></div><div></div></div><div><div></div><div></div><div></div><div></div><div></div></div><div><div></div><div></div><div></div><div></div><div></div></div></div></div> <div><div><div></div><div></div><div></div><div></div><div></div></div><div><div></div><div></div><div></div><div></div><div></div></div><div><div></div><div></div><div></div><div></div><div></div></div><div><div></div><div></div><div></div><div></div><div></div></div></div> <div><div><div></div><div></div><div></div><div></div><div></div></div><div><div></div><div></div><div></div><div></div><div></div></div><div><div></div><div></div><div></div><div></div><div></div></div><div><div></div><div></div><div></div><div></div><div></div></div></div>		"Nik Com" d.o.o. - Nikšić adresa: ul. Milana Papića bb tel/fax: +382(0)40 246 596 mob: +382(0)69 309 588  pib: 02369621 pdv: 40/31-00807-2 žiro račun:530-15313-52	
MINISTRY OF AGRICULTURE AND RURAL DEVELOPMENT MONTENEGRO			
Author of the project:		Object: BIP Bar	
Heading Designer:	<i>D. Miličić</i>	Location:	
Arh. Miličić Dragutin, dipl. ing.		Types of technical documentation:	
Responsible Designer:		Main project to equip the facility	
Arh. Miličić Dragutin, dipl. ing.		Part of the technical documentation:	SCALE:
Asistant:		ARCHITECTURE	R=1:50
		Sheet name : Cloakroom and shower	Sheet number: 6
Creation date and place of seals:  JANUARY 2015.		Revision date and place of seals:	